

# CP-UNC-TE21ZL12E-VMD-V2

## 2MP AI WDR IR Network Bullet Camera - 120Mtr.

- 1/2.8" 2MP PS CMOS Image Sensor (0.9071 centimeters)
- Max. 25/30fps@1080P (1920 × 1080)
- Instastream and Smart H.264+ triple-stream encoding
- WDR(120dB), Day/Night (ICR), 3D-DNR, Defog, ROI, EIS, AWB, AGC, BLC, HLC
- 7mm~35mm Motorized Lens
- IR Range of 120 Mtrs, Micro SD Card, IP67, IK10, ePoE, PoE
- Mobile Software: iCMOB, gCMOB
- CMS Software: KVMS Pro



### System Overview

Understanding the need of the hour in the security and surveillance industry, this series has been integrated with the starlight technology along with efficient and powerful deep-learning algorithms to make your life hugely easier. The numerous AI-based smart functions of this camera let you capture a face, protect the perimeter and even count people, greatly improving the accuracy of your video analysis. This camera also complies with international certification standards such as IP67 and IK10, as this camera is not just dust-proof and water-proof but also shock-proof and vandal-proof (which is given in selected models).

### Functions

#### Face Detection

With the help of the deep learning algorithm that is used in this technology, people can easily be detected, tracked, recorded, and captured. It takes only a second to detect one human face. This facial recognition technology uses biometrics to map facial features from a photograph or video and compares the information with a database of known faces to find a match.



# CP-UNC-TE21ZL12E-VMD-V2

## 2MP AI WDR IR Network Bullet Camera - 120Mtr.

### Functions

#### Wide Dynamic Range (WDR)

When a scene is partly dark and partly bright, that is the dynamic range that distorts images due to this difference in the lighting. WDR technology provides you balanced lighting for a clear and vivid image throughout the day. WDR technology can be installed at entry/exit points of any building structure, jewellery shops, outdoor location among so many other places.

#### Live Viewing

Unlike some, this technology enables you to record the picture feed but view it live as well at your convenience. On top of that, the advantages of high-resolution video recording are numerous.

#### Smart Analytical Support

Using an advanced algorithm, smart analytical technology lets you set a multitude of safety parameters and sends you alerts when any of those parameters have been compromised. Not just when there's an occurrence of tripwire or intrusion, but also in the cases of missing or abandoned objects.

#### True Day/Night (ICR)

When the scene is too dark, the image is captured by illuminating an infrared light through the camera onto the scene that greatly helps with making the scene visible for the lens. It delivers color images during the day and automatically switches to the monochrome feature as the scene darkens.

#### Regions of Interest

Regions of Interest (ROI) is a user defined feature that allows the operator to monitor specific areas of a scene while still maintaining overall situational awareness of less important areas.

#### gCMOB/ iCMOB

Designed to allow users to access and control live streaming from CP PLUS IP Cameras, DVRs/ NVRs and Video Door Phones, the CP PLUS gCMOB/ iCMOB application offers a host of features such as Easy GUI, up to 16 live viewing split-ups; InstaOn cloud support; Playback; digital zoom ins; two-way talk, and more.

### About CP PLUS

The brand that is on its way to lead the world when it comes to the security and surveillance industry, CP PLUS, keeps bombarding the market with the most reliable range of products that have been designed carefully and methodically to automate the whole surveillance and security process, no matter how big your premises are.

It was the initiative to help the public in the area where they are the most vulnerable and to empower the sense of safety in our hearts that had conceptualized CP PLUS. And embarking on its mission to make the world a safer and more secure place has taken the brand's journey to unprecedented levels even when compared to international competitors.



# CP-UNC-TE21ZL12E-VMD-V2

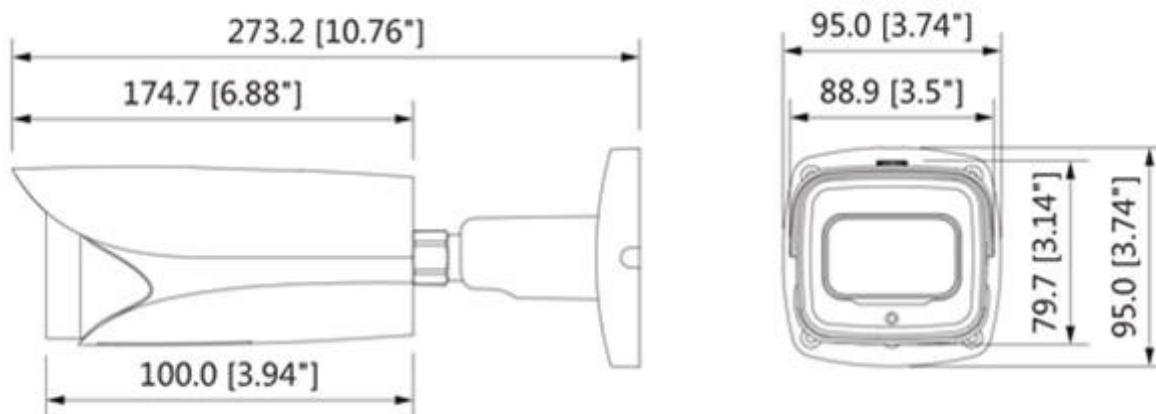
## 2MP AI WDR IR Network Bullet Camera - 120Mtr.

Feature	Specification
Image Sensor	1/2.8" 2MP Progressive scan CMOS (0.9071 centimeters)
Minimum Illumination	0.0015 Lux@F1.3
Shutter Speed	Auto/Manual, 1/3 s–1/100000 s
White Balance	Auto/Natural/Street Lamp/Outdoor/Manual
Lens	7mm ~35mm
Close Focus Distance	0.3 m–2.0 m
Aperture Type	Auto (HALL)
Mount Type	Board-in
Max. Aperture	F1.3( Constant F1.3 throughout the zoom range)
Lens Type	Motorized
DORI Distance	W- 131m (Detect) 52m (Observe) 26m (Recognize) 13m (Identify) T- 428m(Detect) 171m (Observe) 86m (Recognize) 43m (Identify)
Gain Control (AGC)	Auto/Manual
Video Compression	Instastream, Smart H.264+, H.265, H.264, H.264B, H.264H, MJPEG (only supported by sub stream)
S/N Ratio	> 56dB
Back Light Compensation	BLC/ HLC/ WDR(120dB)
Angle of View	H: 33°–10°, V: 19°–5°
Video Streaming	Main Stream: 1080P (1 fps–25/30 fps) ; Sub Stream: D1 (1 fps–25/30 fps) ; Third Stream: 1080P (1 fps–6 fps)
Resolution	1080P (1920 × 1080)/1.3MP (1280 × 960)/720P (1280 × 720)/D1 (704 × 576/704 × 480)/VGA (640 × 480)/CIF (352 × 288/352 × 240)
Motion detection	Off/On (4 Zone, Rectangle)
Privacy Mask	Off/On (4 Area, Rectangle)
ICR	Auto (ICR)/Color/B/W
Mirror	Off/On

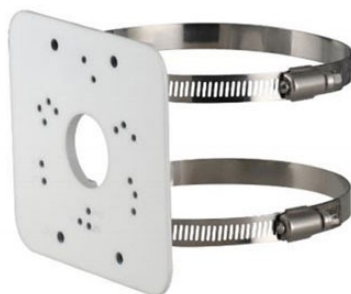
Feature	Specification
ROI	Off/On (4 Zone)
Audio Input	1 Channel
Audio Compression	G.711a, G.711Mu, AAC, G.726, G.723
Audio Output	1 Channel
Alarm IN	2 channel In: 5mA 5V DC
Alarm Out	1 channel Out: 300mA 12V DC
Protocol	IPv4; IPv6; HTTP; HTTPS; TCP; UDP; ARP; RTP; RTSP; RTCP; RTMP; SMTP; FTP; SFTP; DHCP; DNS; DDNS; QoS; UPnP; NTP; Multicast; ICMP; IGMP; NFS; PPPoE; 802.1x; SNMP; ONVIF (Profile S/Profile G/Profile T), CGI, Milestone, Genetec, InstaOn
Smart Detection	Object Abandoned/Missing, Heat Map
Ethernet	RJ-45 (10/100Base-T)
Face Detection	Face detection; track; optimization; snapshot; report high quality picture; face enhancement; face exposure; face attribute extract, 6 attributes and 8 expressions: Gender, age, glasses, expressions (anger, calm, happiness, sadness, disgust, surprise, confusion and fear), mask, beard; face matting setting: face, single inch photo; three snapshot methods: real-time snapshot, optimization snapshot, quality priority; face angle filter; optimization time setting
Event Trigger	Motion detection, Video tampering , Scene changing, Network disconnection , IP address conflict, Illegal Access, Storage anomaly
Alarm Event	No SD card; SD card full; SD card error; network disconnection; IP conflict; illegal access; motion detection; video tampering; Defocus Detection; scene changing; intrusion; tripwire; abandoned object; missing object; fast moving; parking detection; loitering detection; people gathering; audio detection; people counting; face detection; voltage detection; People counting in area; Stay alarm; People No. exception detection; Queue Management
Perimeter Protection	Tripwire; intrusion; fast moving (the three functions support the classification and accurate detection of vehicle and human); loitering detection; people gathering; parking detection
People Counting	Support the counting of enter number, leave number, and pass number, and displaying and outputting yearly/monthly/daily reports. Support the counting of number in area, and 4 rules configuration. Count number of people or stay time and link alarm. Support queue management, and 4 rules configuration. Count number of people or stay time and link alarm.
SDK and API	Yes
User Account	20 Users
IR	IR Range of 120 Mtr., Smart IR
No of IR LEDs	4

Feature	Specification
Smart Phone	iPhone, iPad, Android Phone
Micro SD	NAS; FTP; SFTP; Micro SD card 256GB
Operating Temperature	-30°C~+60°C, Less than 95% RH
Power Source	DC 12V (±30%), PoE (802.3af), ePoE
Power Consumption	<10.3W
Weatherproof Standard	IP67 & IK10
Casing	Metal, plastic
Dimension	273.2 mm × 95.0 mm × 95.0 mm
Weight	1.11kg

Dimensions (mm/inch)



Accessories : Optional



CP-UA-B2P  
Pole Mount

**Company Name:**

CP PLUS (Aditya Infotech Ltd.)

F-28 Okhla Industrial Area, Phase 1,

New Delhi - 110020, INDIA

Contact Mail ID :- [customer care@cpplusworld.com](mailto:customer care@cpplusworld.com)